

Development of Policy and Guidance Documents

James Stapleton

Content



- Reasons for new policies
- Design
- New Policies

Reasons for new policies



- EA /ILAC/IAF
- Clarification
- Improvement
- New work areas

EA/ILAC/IAF



- PS7
- Accredited Certificates Outside Ireland

Clarification



- PS16
- Development of certification schemes and extensions to scope of accreditation

Improvement



- Feedback
- Experience
- Suggestions from INAB staff
- PS10

New work areas



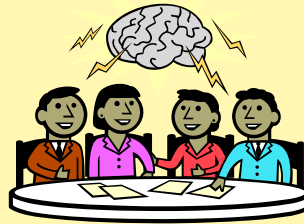
- P10
- Inspection
- Classification System for Inspections

Design of new Policy

- In-house



- Consultation



- Adapt existing policy



In-house



- PS12
- Areas which is regulated by legislation
- Origin- Drinking Water Directive
- Other Legislative areas
- Decision - generic policy to cover all legislation - handle through contract review process

In-house



- PS10
- Submission of information prior to an assessment visit.
- Developed to aid the assessment process
- Has been modified over time
- Useful for organisations to consult prior to visit
- PS10a

Consultation



- PS3
- The Examination of Foods for *E.coli* O157
- Specialist area
- Legislative requirements
- Committee formed to consider
 - Assessor/INAB/Accredited labs
- Policy formulated

Consultation



- PS5
- Performance of Reports
- Issue for calibration laboratories
- Committee formed
 - INAB/NML/Accredited Labs

Consultation



- New work areas - ISO 15189
- Specifically in relation to Blood Banks
- Specify standards needed to be in place to ensure compliance with Blood Directive
- 14 Members
- IMB, INAB, IBTS, Hospitals
- AML-BB published

Consultation - General



- Work with regulators
- HSA
- NRA
- EPA
- SEI

Adaptation



- PS15
- Guide to Method Validation for Quantitative Analysis in Chemical Testing Laboratory
- Based on a Danish document
- Use made of assessors' knowledge and experience

Modification of existing policies



- Peer review
 - PS1
- Feedback from accredited organisations
 - P9 - food categories
- Improvement
 - PS10

New Policies



- Introduction - as needed
- Assessor forums/INAB Board
- Open to feedback

Policies in pipeline

- No current consultative committee



Frequency



- Re-issue when changes significant
- New policy - anytime
- Otherwise once a year

Notification of change



- Email alert system
 - Highlight changes
- Lead-in time - where possible - e.g.
 - Audits of previous non-compliances
 - Period for clearance on major non-compliances



Thank you